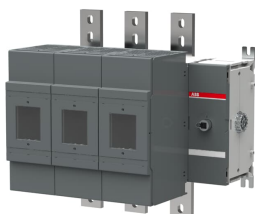


PRODUCT-DETAILS

OS1200L30

OS1200L30 SWITCH FUSE



General Information

Extended Product Type	OS1200L30
Product ID	1SCA109345R1001
EAN	6417019425184
Catalog Description	OS1200L30 SWITCH FUSE
Long Description	Switch Fuses,Front Operated,3-pole,30 (Right Side),Class L,1200 A,Handle and shaft not included,

Circular Value

Conflict Minerals Reporting Template (CMRT)	9AKK108467A5658
REACH Declaration	1SCC011021D0201
RoHS Information	1SCC011020D0201

Ordering

Minimum Order Quantity	1 piece
Customs Tariff Number	85365080
Country of Origin	Finland (FI)

Popular Downloads

Data Sheet, Technical Information	1SCC311013C0201
Instructions and Manuals	1SCC311022M0207
Mechanical Drawings	OS1200L30.stp

Dimensions

Product Net Width	429 mm
Product Net Height	426 mm
Product Net Depth / Length	294 mm
Product Net Weight	31.23 kg 68.85 lb

Technical

Rated Operational Current AC-21B (I_e)	(500 V) 1250 A (690 V) 1250 A
Rated Operational Current AC-22A (I_e)	(380 ... 415 V) 1250 A
Rated Operational Current AC-22B (I_e)	(500 V) 1250 A (690 V) 1250 A
Rated Operational Current AC-23A (I_e)	(380 ... 415 V) 1000 A
Rated Operational Current AC-23B (I_e)	(500 V) 1000 A (690 V) 1000 A
Rated Operational Power AC-23A (P_e)	(220 ... 240 V) 315 kW (400 V) 560 kW (415 V) 560 kW (500 V) 710 kW (690 V) 1000 kW
Conventional Free-air Thermal Current (I_{th})	$\Theta = 40^\circ\text{C}$ 1250 A
Conventional Thermal Current (I_{the})	Fully Enclosed 1000 A
Rated Impulse Withstand Voltage (U_{imp})	12 kV
Rated Insulation Voltage (U_i)	1000 V
Rated Operational Voltage	Main Circuit 690 V AC
Rated Short-time Withstand Current Low Voltage (I_{cw})	for 1 s 40 kiloampere rms
Rated Conditional Short-Circuit Current (I_{nc})	(690 V) 80 kA
Power Loss	at Rated Operating Conditions per Pole 110 W
Pollution Degree	3
Handle Type	Handle and shaft not included
Switches Operating Mechanism	30 (Right Side)
Position of Line Terminals	Top In - Bottom Out, Bottom In - Top Out
Fuse Size	1200 A
Fuse System	Class L
Operating Mode	Front Operated
Standards	UL98 IEC 60947-3

Mounting Type	Base mounting
Number of Poles	3
Cable Cross-Section	2.5 ... 25 mm ²
Terminal Type	Lug terminals
Terminal Width	50 mm
Rated Current (I _n)	Main Circuit 1200 A

Technical UL/CSA

Ampere Rating	1200 A
Tightening Torque UL/CSA	Wire-Clamp 500 in-lb Cable Lug 480 in-lb

Environmental

RoHS Status	Following EU Directive 2011/65/EU and Amendment 2015/863 July 22, 2019
-------------	--

Certificates and Declarations

CCC Certificate	CCC OS1200-1250 2015.pdf
Declaration of Conformity - CE	1SCC311127D2703
EAC Certificate	EAC OT_OTDC_OTL_OTP_OTR_OTU_OTE_OETL_OESA_OESC_OTM_OS_OS M_.pdf
REACH Declaration	1SCC011021D0201

Container Information

Package Level 1 Units	box 1 piece
Package Level 1 Width	444 mm 17.48 in
Package Level 1 Depth / Length	714 mm 28.11 in
Package Level 1 Height	385 mm 15.16 in
Package Level 1 Gross Weight	34.43 kg 75.91 lb
Package Level 1 EAN	6417019425184

Classifications

Object Classification Code	Q
ETIM 4	EC001040 - Fuse switch disconnecter
ETIM 5	EC001040 - Fuse switch disconnecter
ETIM 6	EC001040 - Fuse switch disconnecter
ETIM 7	EC001040 - Fuse switch disconnecter
ETIM 8	EC001040 - Fuse switch disconnecter
ETIM 9	EC001040 - Fuse switch disconnecter
UNSPSC	39122233
IDEA Granular Category Code (IGCC)	5291 >> Fuse switch disconnecter
eClass	V11.1 : 27371401

Categories

Low Voltage Products and Systems → Switches → Switch Fuses

